

Better support diabetic members

Blood glucose monitoring through
Wellframe's new glucometer device
integration



Meet the presenters



Lara Silberklang
Senior Product Manager,
Wellframe



Rachel Daricek
Senior Director of Product Marketing,
Wellframe

Today's discussion

- Remote patient monitoring - what's the big deal?
- Wellframe's enhanced blood glucose monitoring capabilities
 - Data visualization
 - Glucometer device integration
- Q&A

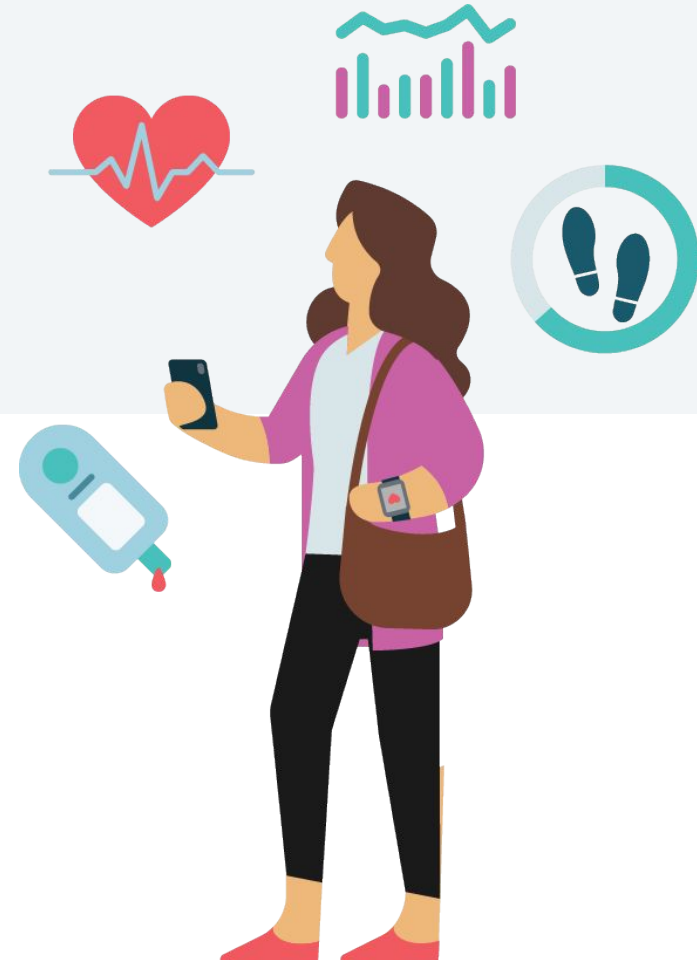


Remote Patient Monitoring (RPM)

Using digital technologies to collect medical and other forms of health data from individuals in one location and electronically transmit that information securely to health care providers in a different location for assessment and recommendations.

Types of patient generated health data that can be monitored remotely:

- symptoms
- medications
- treatment information
- biometrics



Regular insight into health data outside of provider visits can...



Enable earlier interventions

Driving down costs and reducing utilization



Increase knowledge and unlock novel analyses

Through availability of timely, clean data in an accessible format at the population or person level



Improve adherence + patient compliance

As people take ownership of their health



Facilitate personalization

Something patients are clamoring for...e.g., rapid response to alerts, or relevant/timely information

Considerations for choosing a biometrics solution partner



Member Experience

Many apps OR a single app that members are already using to connect with their care manager?

Considerations for choosing a biometrics solution partner

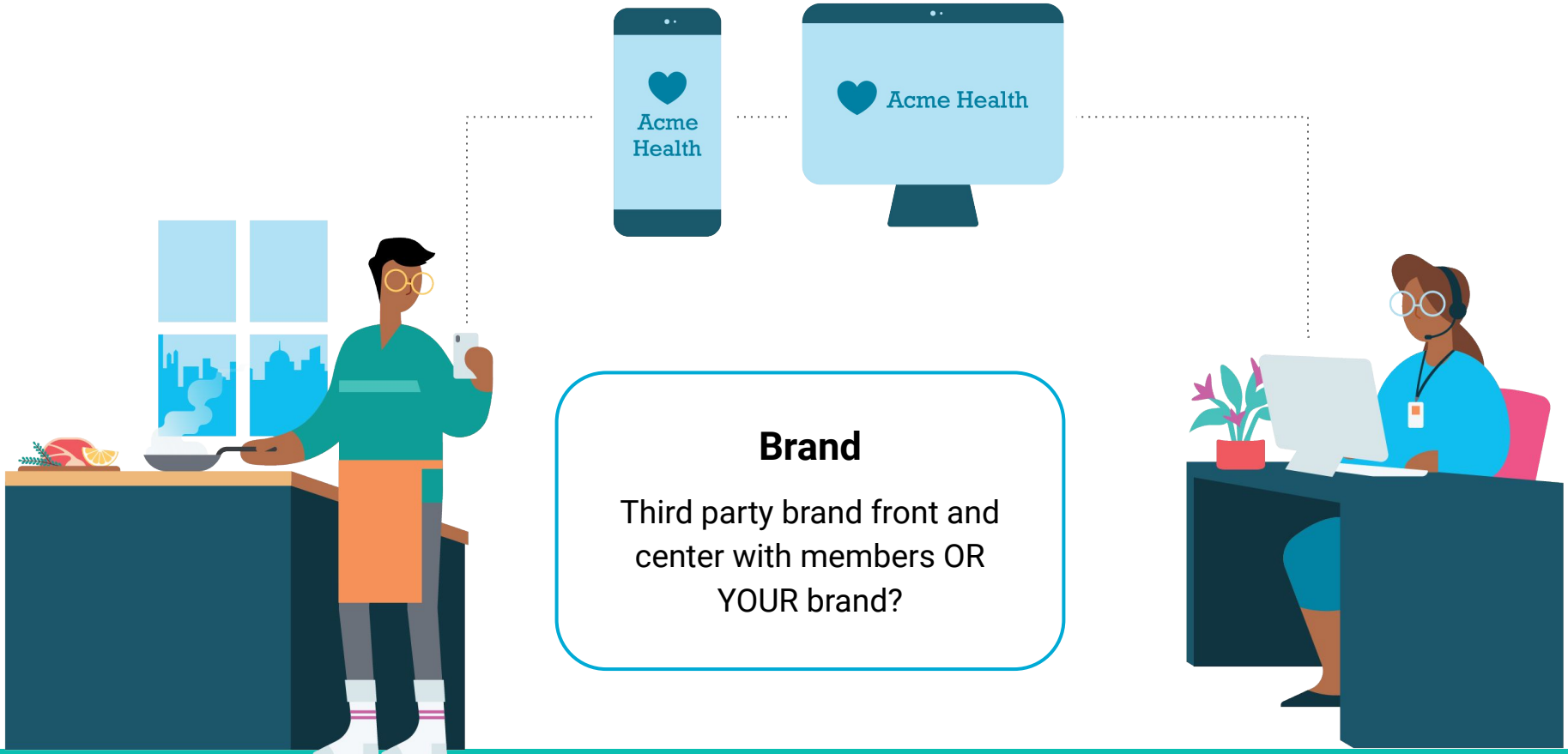


Staff Experience

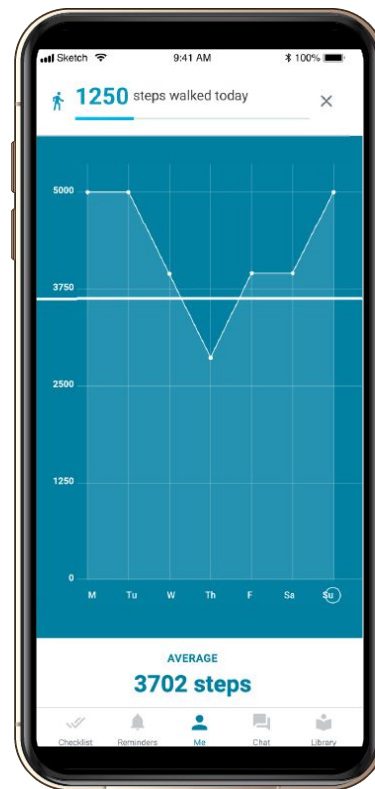
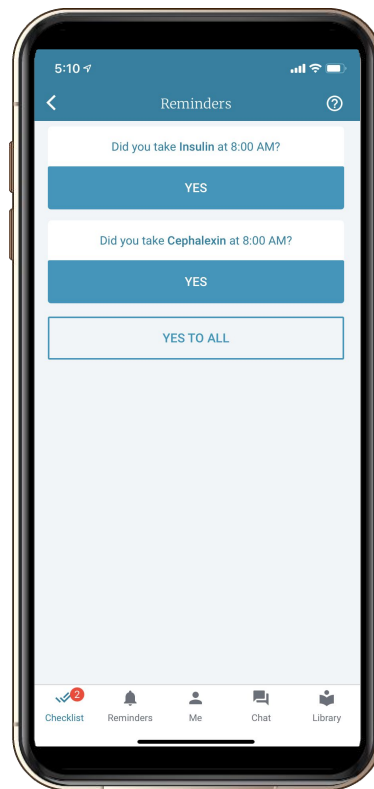
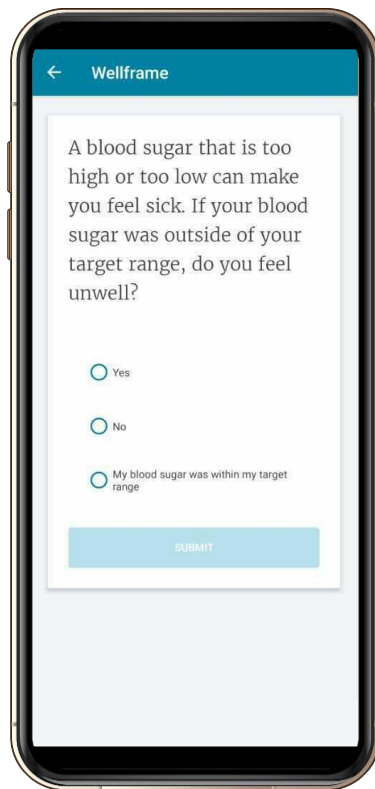
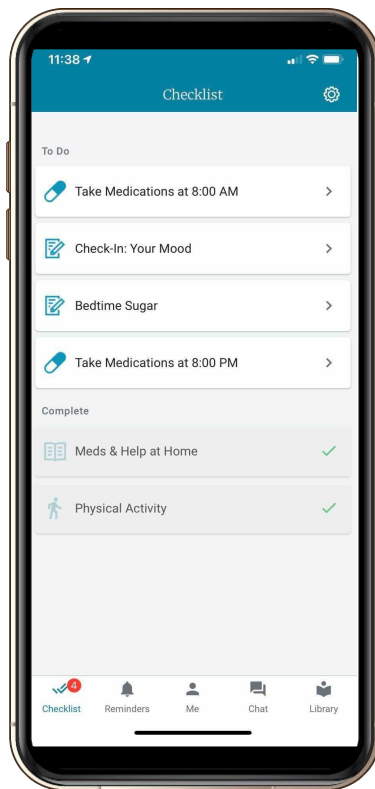
Many dashboards OR a single dashboard that has biometric data + member profile information + health education + chat?



Considerations for choosing a biometrics solution partner



RPM is already built into in our platform and care programs



Add to the digital member experience and staff workflow you already have in place



Glucometer device integration

- Easier for members to enter readings
- Less manual error
- More member touchpoints
- Usable, actionable data



Data visualization enhancements

- Spot trends and anomalies over time and in relation to meal
- Automated detection and alerting for out of range readings



Contact your Wellframe Customer Success team for more information about using these new features



Glucometer device integration

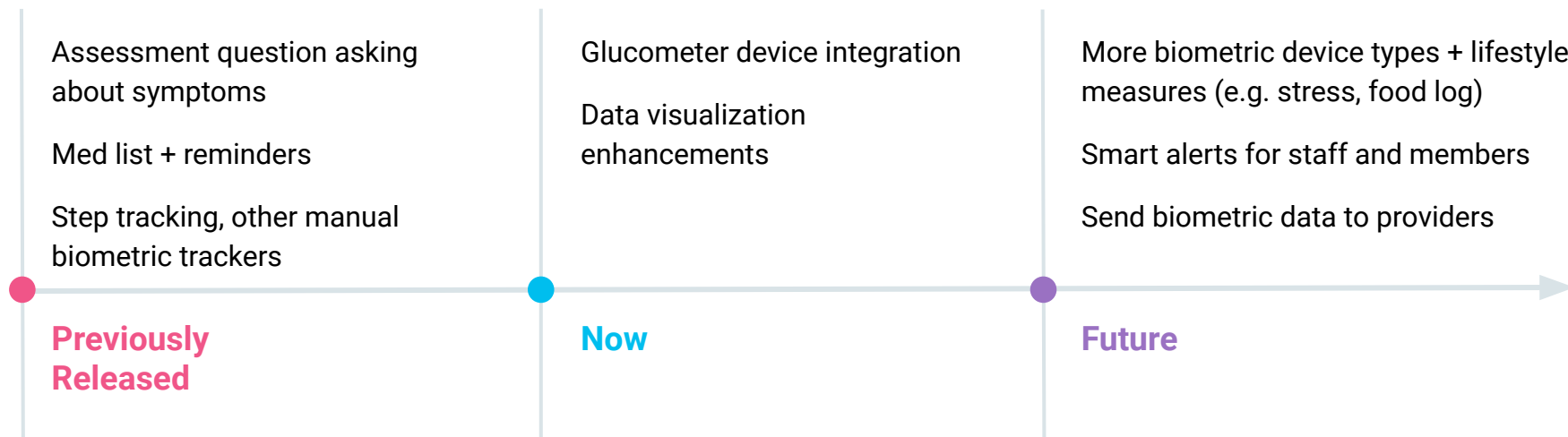
- Can be added to any Digital Care Management (DCM) agreement
- Lifestyles bundle with adult biometrics/blood sugar programs needed



Data visualization enhancements

- Included for all customers with the Lifestyles Bundle
- Visible to members + staff using the adult biometrics/blood sugar programs

Wellframe's RPM and biometric monitoring capabilities will continue to become more robust

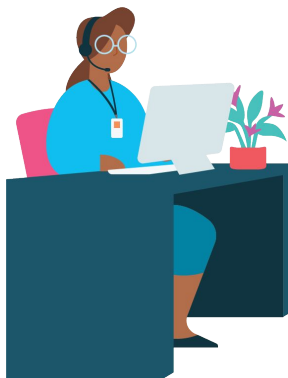


Wellframe glucometer device integration + data visualization

1

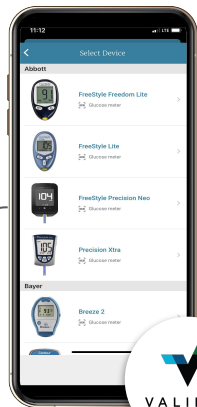
Invite member to blood sugar tracking program with integrated glucometer

Staff Dashboard



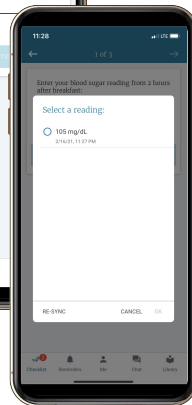
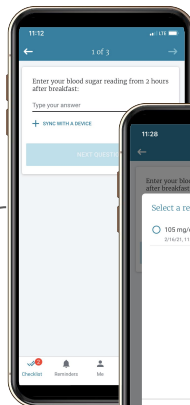
2

Member pairs device



3

Member imports glucose data from device via bluetooth or OCR

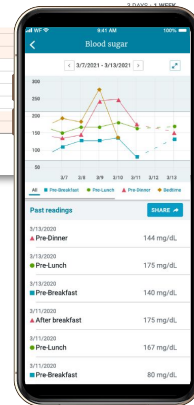
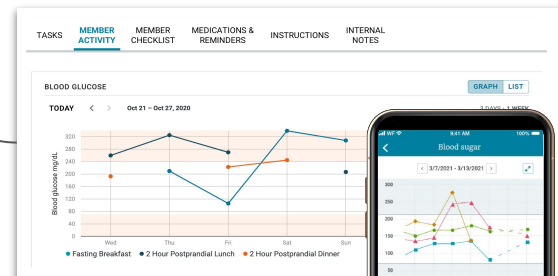


4

Staff alerted if readings are outside of range

5

Member and staff see data visualized in member app and staff dashboard



Thank you!

Recording will be sent to all registrants

